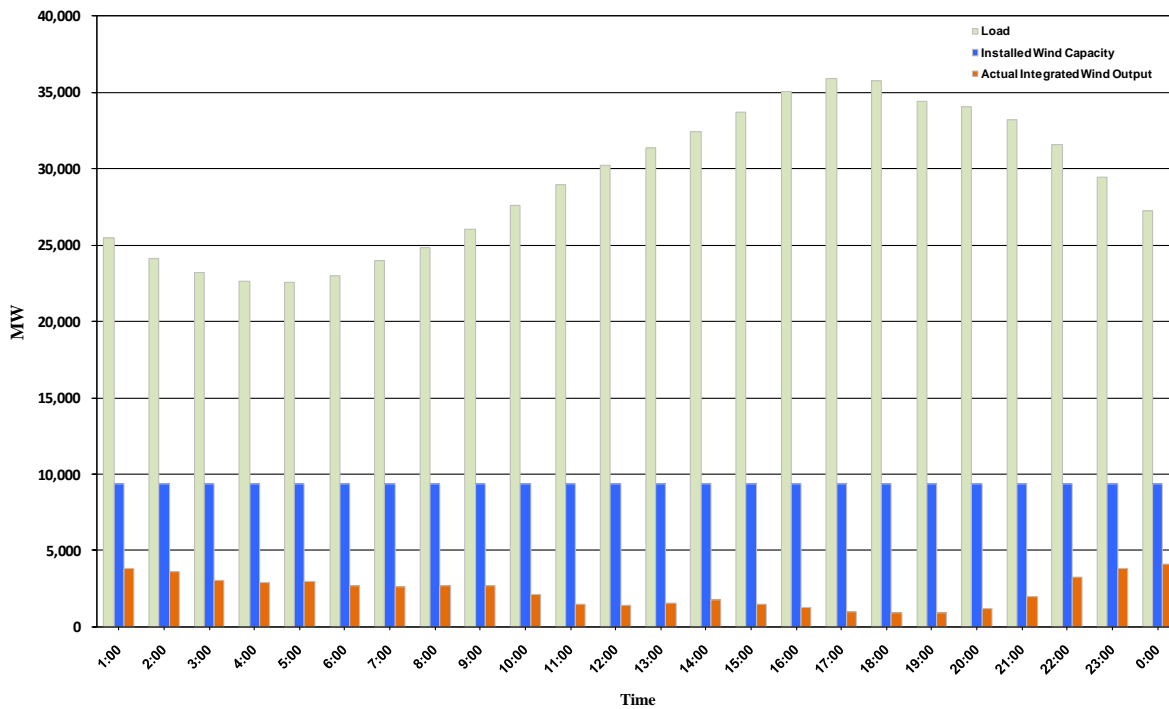




## ERCOT Grid Operations Wind Integration Report: 10/16/10

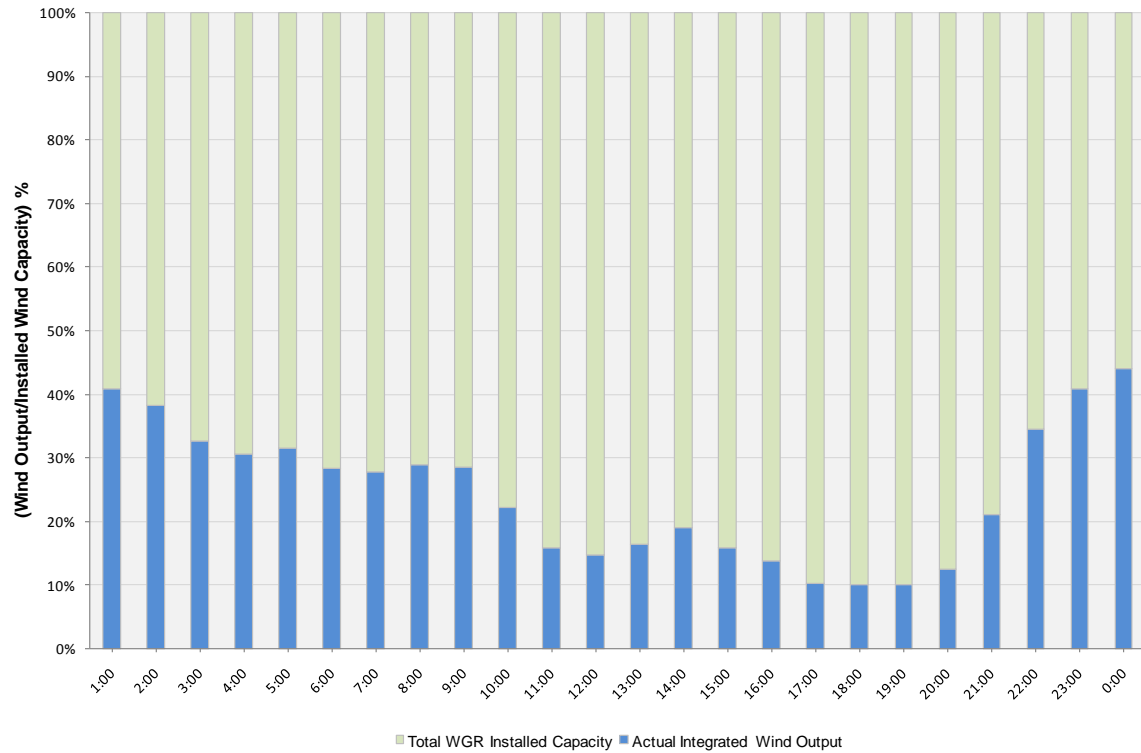
Peak Load	35,923 MW
Load Peak Hour	17
Wind Record 06/12/10	7016 MW
Max Wind value	4258 MW
Wind Peak Hour	23:55:24
Wind Integration %	16.13

Hourly Average Actual Load vs. Actual Wind Output  
10-16-2010

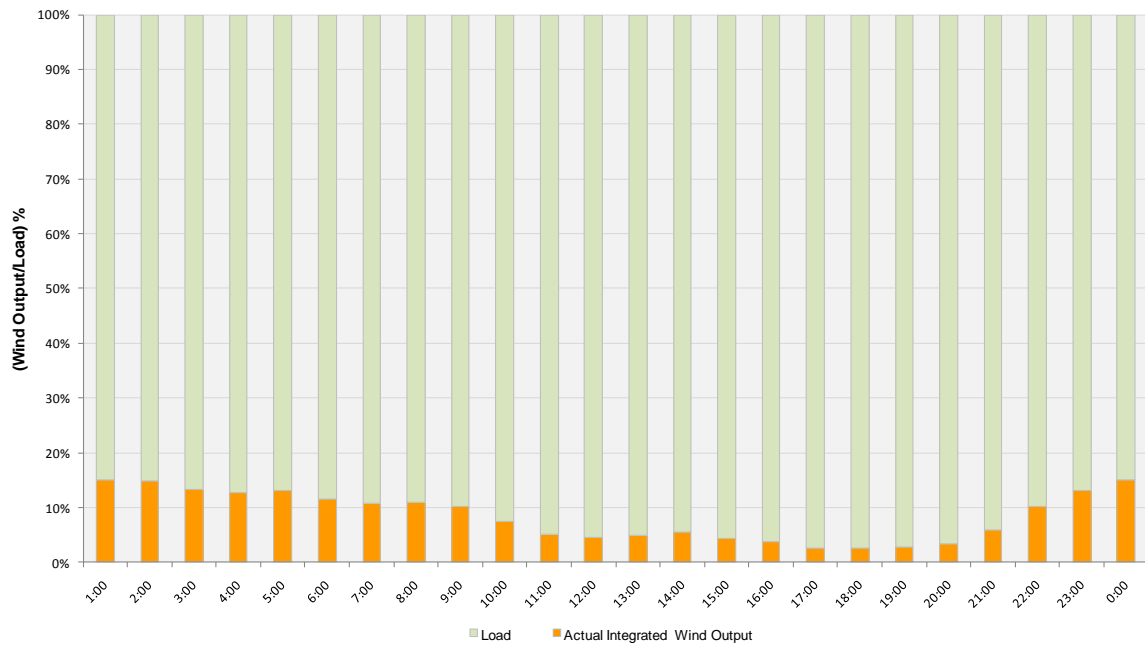




**Actual Wind Output as a Percentage of the Total Installed Wind Capacity**  
**10-16-2010**



**Actual Wind Output as a Percentage of the ERCOT Load**  
**10-16-2010**





**ERCOT Load vs. Actual Wind Output 10/09/10 - 10/16/10**

